

One Gloucestershire Integrated Care System



Our vision for health and care in Gloucestershire

Our vision for health and care in Gloucestershire:

To improve the health and wellbeing of our population, we believe that by all working better together - in a more joined up way, and using the strengths of individuals, carers and local communities - we will transform the quality of support and care we provide to all local people.

**will be replaced with new vision when agreed*

We will do this by focusing on three areas:

1

Health and care services today

2

Transforming what we do now

3

Making Gloucestershire a better place for the future

Our priorities



Health and care services today:

- Supporting improvements in urgent and emergency care
- Reducing waiting times for appointments, treatment and operations as we recover from the pandemic
- Expand and improve mental health services for people of all ages including support for people with learning disabilities and autism.



Transforming what we do now:

- Developing and supporting our existing workforce whilst attracting new people to come and work in Gloucestershire
- Making the most of data and technology to support your care
- Making best use of the 'Gloucestershire pound' and delivering services efficiently.



Making Gloucestershire a better place for the future:

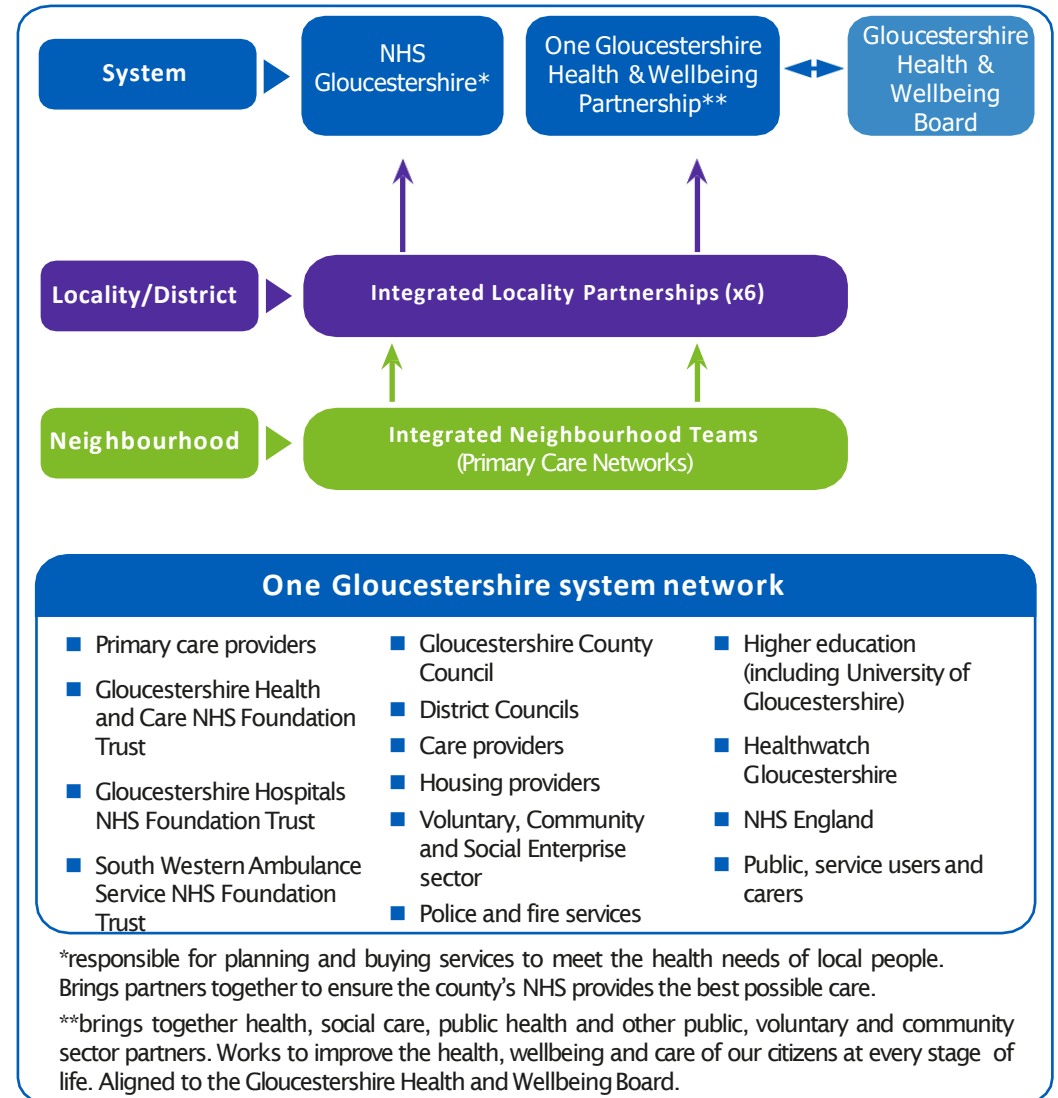
- Improving care across Gloucestershire, closer to home where possible
- Improving the health and wellbeing of our citizens across their lifetime
- Reducing health inequalities
- Supporting broader social and economic development.

One Gloucestershire Integrated Care System (ICS)

One Gloucestershire Integrated Care System will have both an Integrated Care Partnership and Integrated Care Board.

The **Integrated Care Partnership** (called 'One Gloucestershire Health and Wellbeing Partnership') will have strategic oversight for delivery of health and wellbeing outcomes.

The **Integrated Care Board** (called 'NHS Gloucestershire') will have responsibility for ensuring delivery against local health and care priorities and will have oversight of activity focused on improving services and delivering outcomes; people; quality and safety and finance/use of resources.

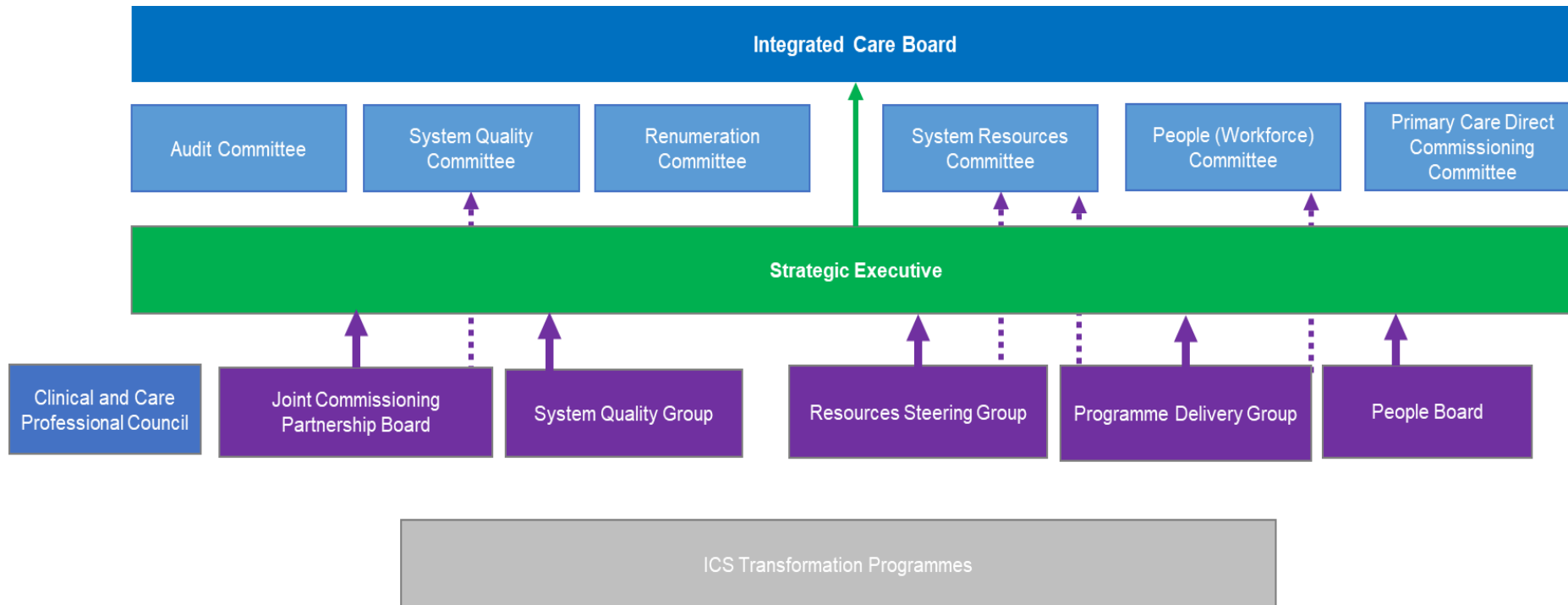


Health and Wellbeing Partnership

- One Gloucestershire Health and Wellbeing Partnership is the name given to our Integrated Care Partnership (ICP).
- The ICP is aligned with Gloucestershire's existing Health and Wellbeing Board, with a shared chair and some members in common.
- It is made up of representatives from health, social care, public health and other public voluntary and community sector partners.
- The partnership will be responsible for agreeing an integrated care strategy for improving health and wellbeing in Gloucestershire.



- NHS Gloucestershire Integrated Care Board is the name given to the organisation that oversees the delivery of health and care in Gloucestershire.
- It is a statutory NHS body that takes on the planning functions, allocate budgets and provides commissioning of services.
- The ICB is responsible for developing the Joint Forward Plan – a 5 year plan that sets out how the NHS will deliver the vision set out within the integrated care strategy.



Supporting the Integrated Care Board

- To support the establishment of the Integrated Care Board and ICS, work has been undertaken over the last few months on a range of areas.
- **This has included:**
 - How we will ensure a broad range of clinical and care professionals are involved in decision making
 - The financial principles that across the system we will work together on
 - How we will support our workforce
 - Opportunities to build on our work with people and communities
 - How we will seek to ensure our health and care services are high quality and safe

